

=====
QUOTE INFORMATION:
=====

Quote Id:
Purchaser:
Project:

Customer Info:

SteelBuildingSupplier.com
225 S Academy Blvd Ste 201
Colorado Springs CO 80910
800.793.8555
Contact:

Quote good for 7 days

=====
BUILDING TYPE
=====

Commercial Rigid Frame Steel

=====
PRICING
=====

Building Components \$

Subtotal \$

State Tax (6.50%) \$

Building Freight \$

Door Freight \$

Insulation Freight \$

Detail/Draft Fee \$

Stamped Plan Sets (1) \$

TOTAL COST \$

=====
BUILDING LOCATION
=====

IL 60142

=====
BUILDING DESIGN SPECIFICATIONS
=====

----- Dimensions -----

Width(ft): 40
Length(ft): 60
Back eave height(ft): 14
Front eave height(ft): 14
Back roof slope: 3.0:12
Front roof slope: 3.0:12

----- Loading -----

Wind Code: IBC 00 Exposure: C
Wind (mph): 90 Importance: 1.00
Roof Live Load (psf): 20
Roof Dead Load (psf): 2
Roof Snow Load (psf): 25
Roof Collateral Load (psf): 1
Seismic: -

Engineering:

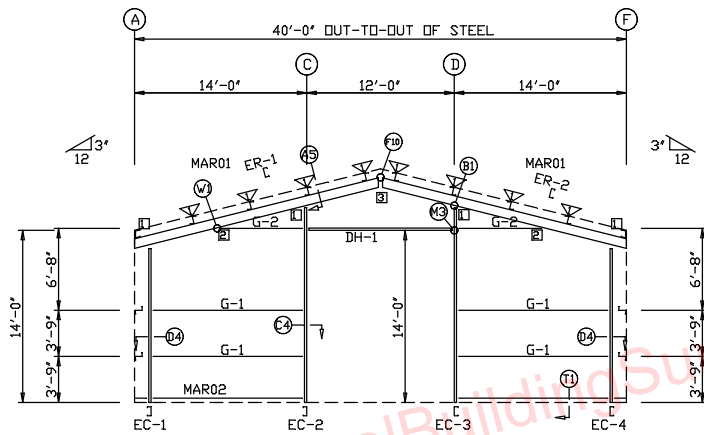
Stamped Plan Sets: 1
Design Calc Sets: none

Covering:

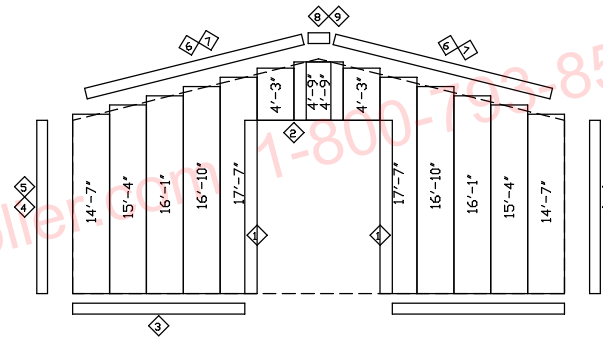
Roof: 26 Gauge, Classic Roof (PBR) Panels, Color: Fox Gray SP
Sidewall: 26 Gauge, Classic Wall (PBR) Panels, Color: Brick Red
Endwall: 26 Gauge, Classic Wall (PBR) Panels, Color: Brick Red
Sidewall trim at eave : Polar White SP
Endwall (rake) trim at roof : Polar White SP
Outside jamb sheeting trim color: Polar White SP
Outside corner trim color : Polar White SP

TRIM TABLE			
FRAME LINE 1			
ID	PART	LENGTH	DETAIL
1	JTA05	14'-1"	TRIM_11
2	HTA05	12'-2"	TRIM_14
3	BSB01	10'-2"	
4	CCA01	20'-2"	
5	MFBO1	10'-1"	TRIM_7
6	RTA01	10'-1"	TRIM_2
7	RTA02	20'-2"	TRIM_2
8	H4110	1'-4"	
9	H4040	1'-4"	TRIM_4

BOLT TABLE				
FRAME LINE 1				
LOCATION	QUAN	TYPE	DIA	LENGTH
ER-1/ER-2	4	A325	1/2"	2"
Columns	2	A325	1/2"	2"



ENDWALL FRAMING: FRAME LINE 1



ENDWALL SHEETING & TRIM: FRAME LINE 1

PANELS: 26 Ga. CW - Brick Red

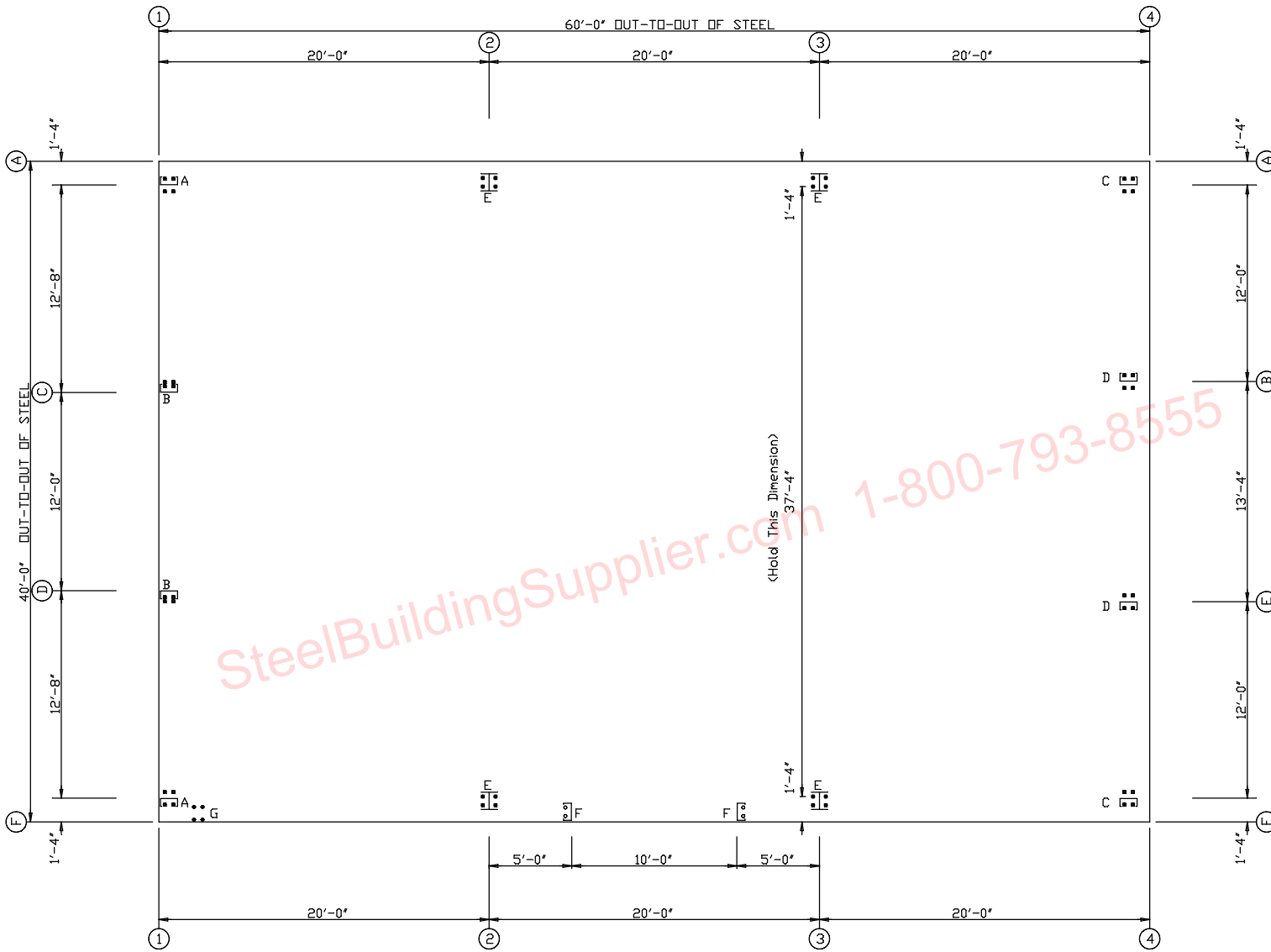
FLANGE BRACE TABLE		
FRAME LINE 1		
ID	MARK	LENGTH
1	FBE01	2'-11 7/8"

CONNECTION PLATES		
FRAME LINE 1		
ID	MARK/PART	
1	EWAO1	
2	C1	
3	NCR05	

ENDWALL FRAMING PLAN: General Notes

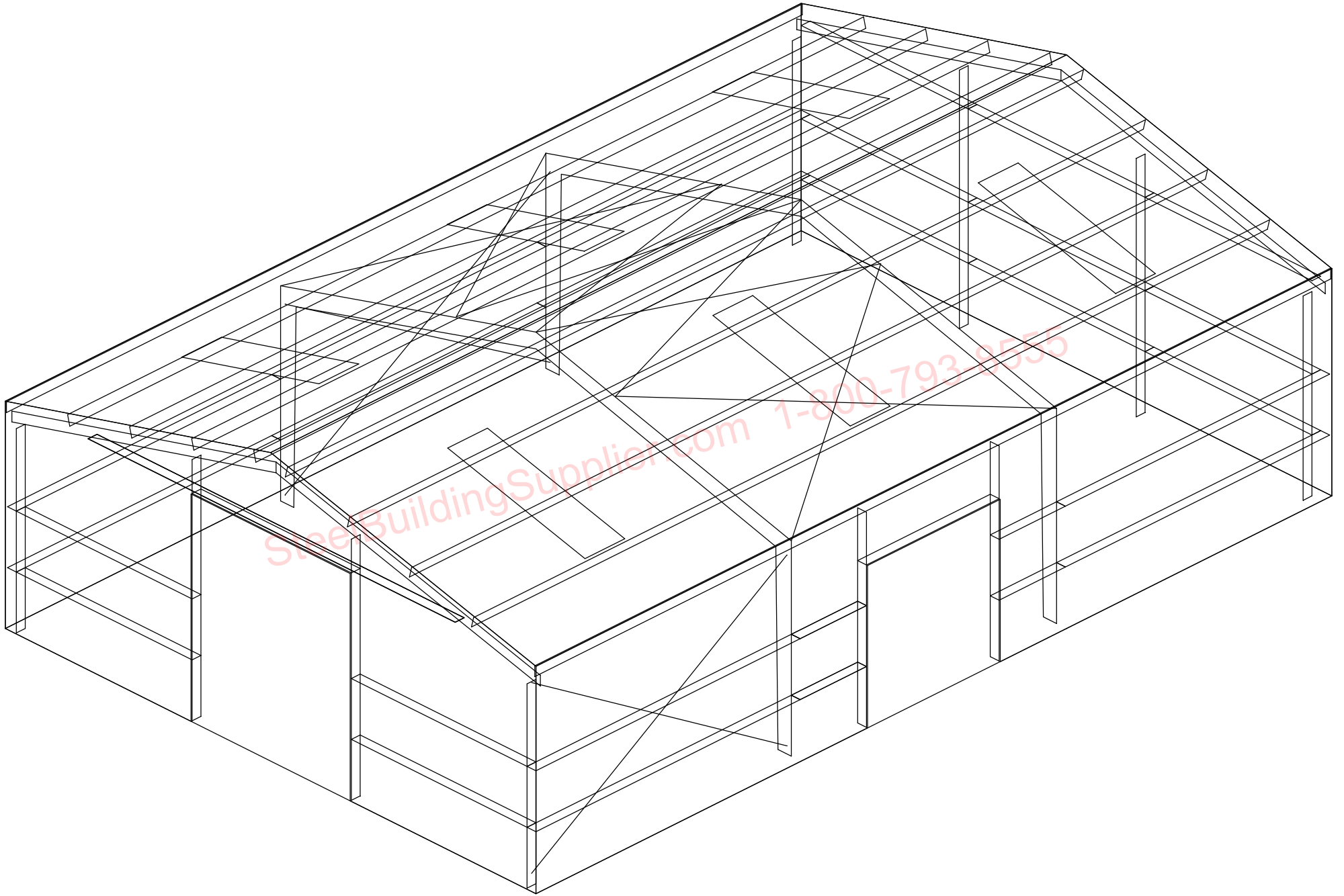
- STANDARD ROD/CABLE SIZES PER PART PREFIX

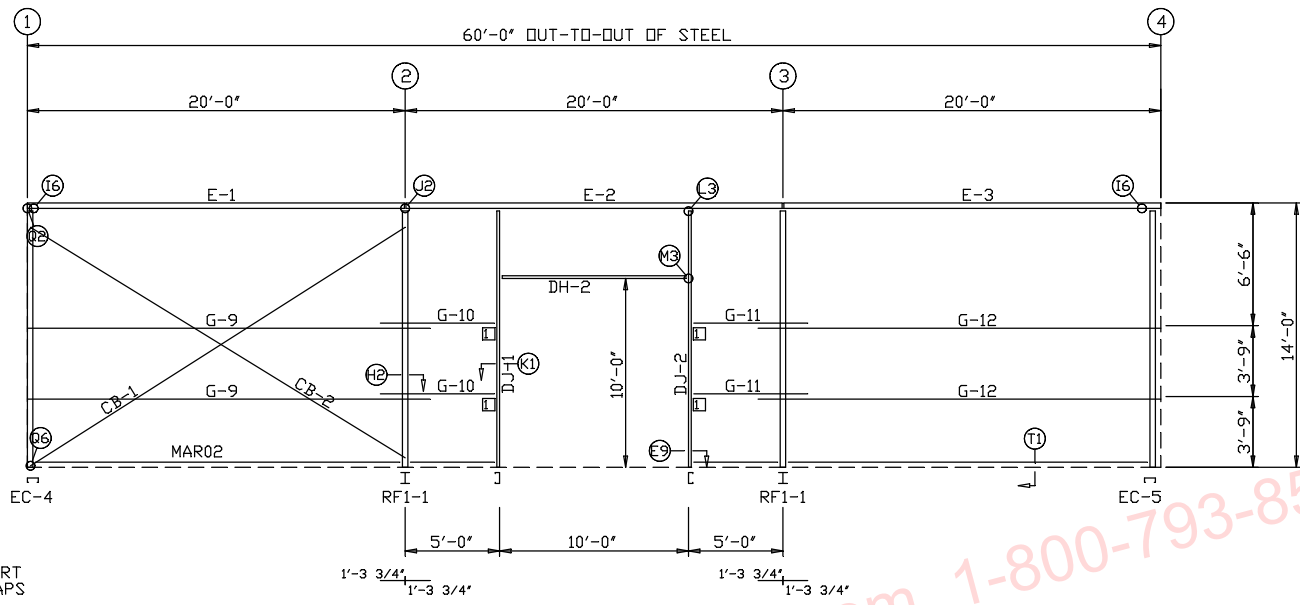
ROD	CABLE
RDB- = 5/8" ROD	RDE- = 1" ROD
RDC- = 3/4" ROD	RDF- = 1 1/8" ROD
RDD- = 7/8" ROD	RDG- = 1 1/4" ROD
	CAA- = 1/4" CABLE
	CAB- = 3/8" CABLE
	CAC- = 1/2" CABLE
- ROD/CABLE BRACING THAT OCCURS IN FLUSH OR INSET GIRT CONDITIONS WILL REQUIRE FIELD SLOTTING OF GIRT WEBS TO ALLOW FOR BRACING.
- FRAMED OPENINGS WHICH ARE FIELD LOCATED WILL REQUIRE FIELD CUTTING OF GIRTS AND SHEETING.
- THIS DRAWING IS NOT TO SCALE.



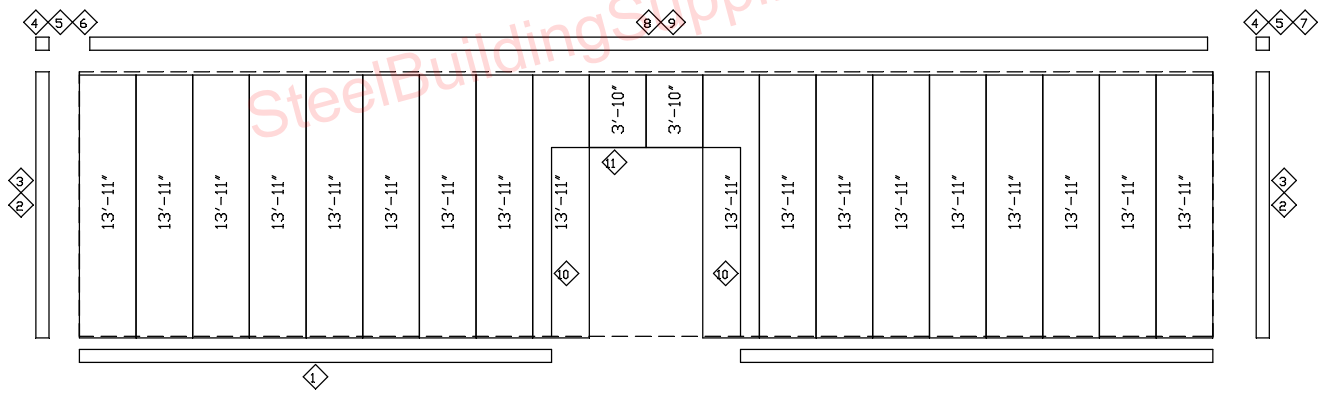
ANCHOR BOLT PLAN
NOTE: All Base Plates @ 100'-0" (U.N.)

- Dia= 1/2"
- Dia= 3/4"
- Dia=1"





SIDEWALL FRAMING: FRAME LINE F



SIDEWALL SHEETING & TRIM: FRAME LINE F

PANELS: 26 Ga. CW - Brick Red

TRIM TABLE FRAME LINE F			
ID	PART	LENGTH	DETAIL
1	BSB01	10'-2"	
2	DCA01	20'-2"	
3	MFB01	10'-1"	TRIM_7
4	H4000	5"	
5	ERA01	8 1/16"	
6	RCA01	9 1/4"	
7	RCA02	9 1/4"	
8	LEA01	10'-2"	TRIM_5
9	CTA01	10'-1"	TRIM_5
10	JTA03	10'-1"	TRIM_11
11	HTA04	10'-2"	TRIM_14

CONNECTION PLATES FRAME LINE F	
ID	MARK/PART
1	JCA&P02

SIDEWALL FRAMING PLAN: General Notes

- STANDARD ROD/CABLE SIZES PER PART PREFIX

ROD	CABLE	
RDB- = 5/8" ROD	RDE- = 1" ROD	CAA- = 1/4" CABLE
RDC- = 3/4" ROD	RDF- = 1 1/8" ROD	CAB- = 3/8" CABLE
RDD- = 7/8" ROD	RDG- = 1 1/4" ROD	CAC- = 1/2" CABLE
- ROD/CABLE BRACING THAT OCCURS IN FLUSH OR INSET GIRT CONDITIONS WILL REQUIRE FIELD SLOTTING OF GIRT WEBS TO ALLOW FOR BRACING.
- FRAMED OPENINGS WHICH ARE FIELD LOCATED WILL REQUIRE FIELD CUTTING OF GIRTS AND SHEETING.
- THIS DRAWING IS NOT TO SCALE.